

NUTRITIONAL SUPPORT WITH AN ENERGY- AND NUTRIENT-DENSE FEED WITH 2'-FUCOSYLLACTOSE (2'-FL) SUPPORTS GROWTH WITH GOOD COMPLIANCE, ACCEPTABILITY AND TOLERANCE IN INFANTS WITH FALTERING GROWTH

AUTHORS

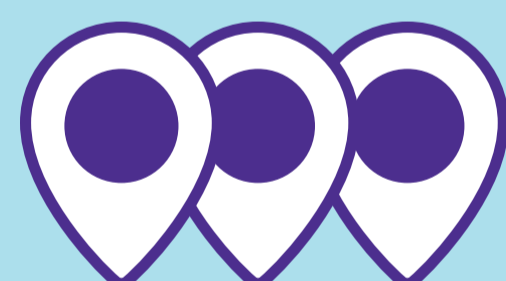
M. Delsoglio¹, R. Capener¹, S. Trace², E. Evans², L. Marino³, K. Palframan³, L. Rees³, G. O'Connor⁴, J. Rayner⁵, M. Tizzard⁵, V. Shaw⁵, C. Patchell⁶, V. Patel⁶, S. Aubrey⁷, R. J. Stratton^{1,8}, G. P. Hubbard¹

BACKGROUND

Prebiotic oligosaccharides have been shown to perform a range of beneficial physiological functions through interactions with gut microbiota but evidence for their use in medical nutrition is limited.

METHODS

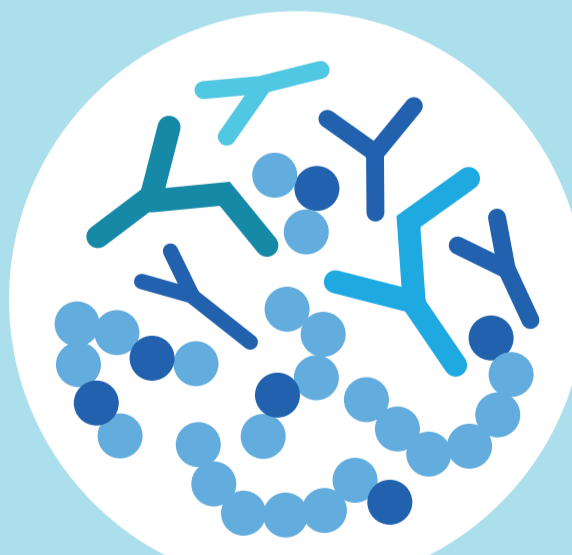
Multi-centre case studies



4 week intervention period



Energy- and nutrient- dense feed (ENDF) containing scGOS/lcFOS supplemented with 2'-FL (Nutricia Ltd.)



PATIENT GROUP

20 INFANTS
(14M:6F),
aged 5.2 months
(SD3.3, range 2-13)



Heart defects
(n=8)



Weight faltering
(n=5)



Genetic disorders
(n=4)

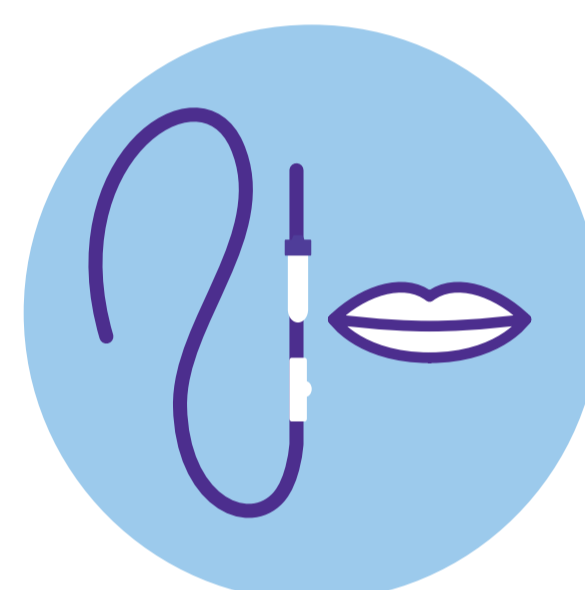


Laryngeal/mandible cleft
(n=2)



Neurological disorders
(n=1)

FEED PRESCRIPTION

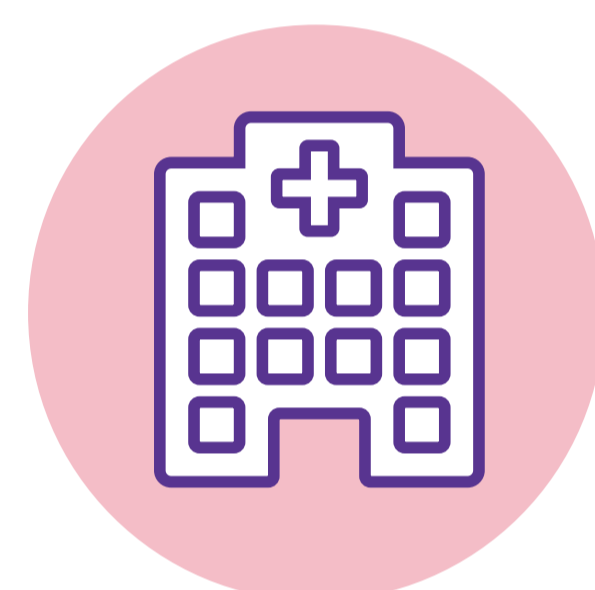


Patients were given the 2'-FL-containing ENDF orally (n=13) and via tube (n=7) for 25 days (SD6, range 7-28 days)

STUDY SETTING



70%
Community



30%
Hospital

MEAN INTAKE



529ml/d (SD245), providing 529kcal/d (SD245) and 10.6g/d (SD4.9) protein

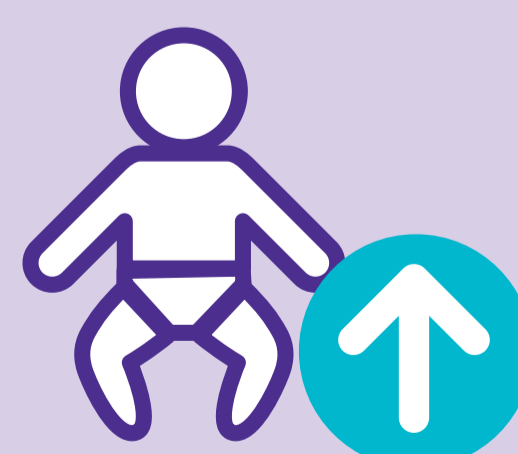
RESULTS

+0.6kg
(SD0.3)

body weight increase vs. baseline (z-score= -2.8 (SD1.8), min -6.8; max -0.5) by end of intervention (z-score= -1.8 (SD1.6), min -5; max -0.1).



+10%
of infants without any GI symptoms from 73% (SD20) to 83% (SD13)



90%
of parents overall satisfied with the feed, especially smell, appearance, and consistency (95%)



100%
HCP satisfaction with infants' tolerance



92%
(SD20) compliance vs. HCP's prescription



CONCLUSIONS

Infants with faltering growth receiving an ENDF with 2'-FL, showed a very high level of compliance, good acceptability and gastrointestinal tolerance, accompanied by increase in body weight and improvement in weight for age z-score.

AFFILIATIONS

¹ Research & Innovation Nutricia Ltd, UK ² University Hospitals Bristol and Weston NHS FT, UK ³ University Hospital Southampton NHS FT, UK ⁴ Great Ormond Street Hospital NHS FT, UK ⁵ Bradford Teaching Hospitals NHS FT, UK ⁶ Birmingham Women's and Children's NHS FT, UK ⁷ Barts Health NHS FT, UK ⁸ University of Southampton, UK